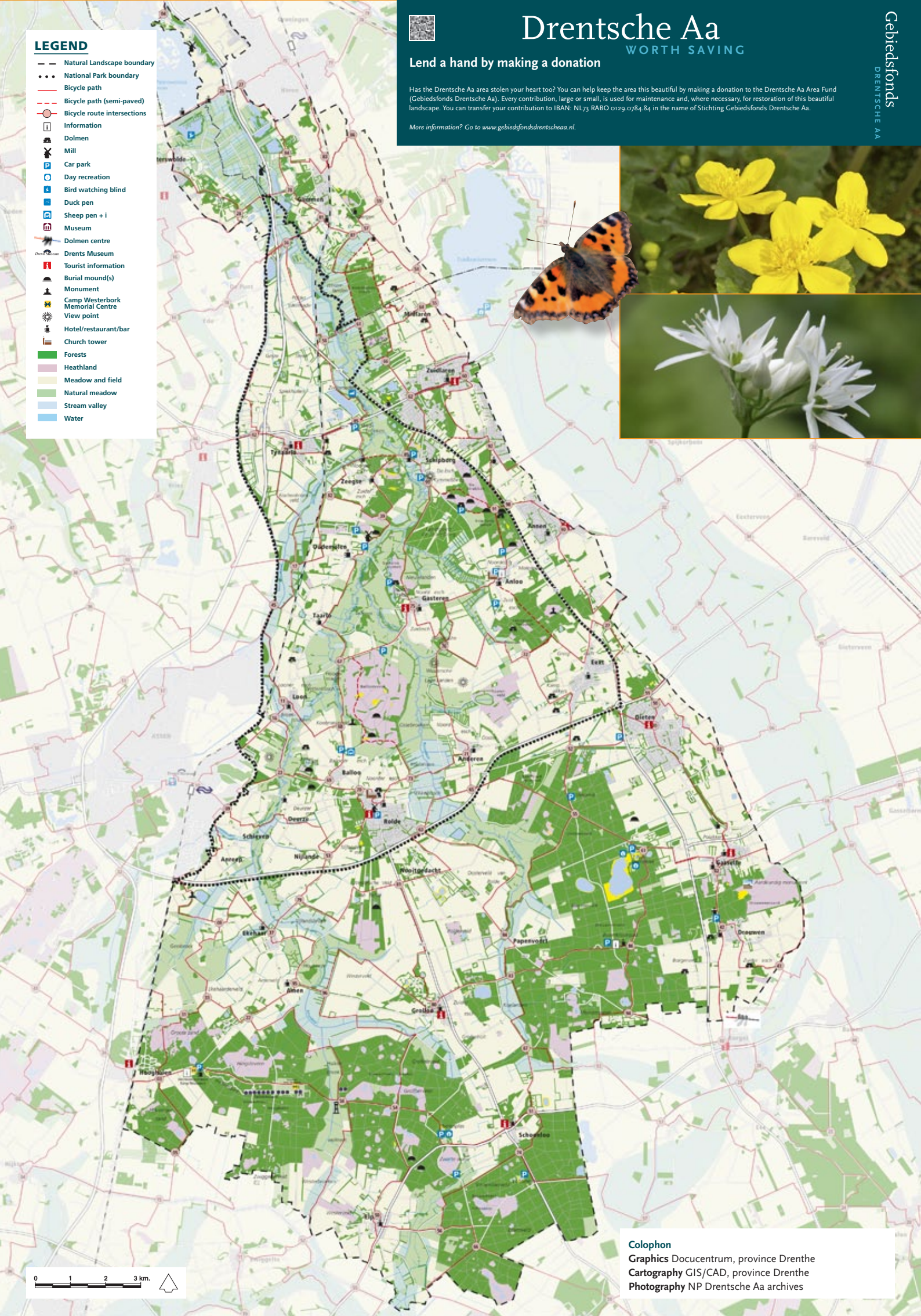


Thousands of years of culture in a fan  
of meandering streams



**LEGEND**

- Natural Landscape boundary
- National Park boundary
- Bicycle path
- Bicycle path (semi-paved)
- Bicycle route intersections
- Information
- Dolmen
- Mill
- Car park
- Day recreation
- Bird watching blind
- Duck pen
- Sheep pen + i
- Museum
- Dolmen centre
- Drents Museum
- Tourist information
- Burial mound(s)
- Monument
- Camp Westerborg Memorial Centre
- View point
- Hotel/restaurant/bar
- Church tower
- Forests
- Heathland
- Meadow and field
- Natural meadow
- Stream valley
- Water



# Drentsche Aa

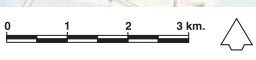
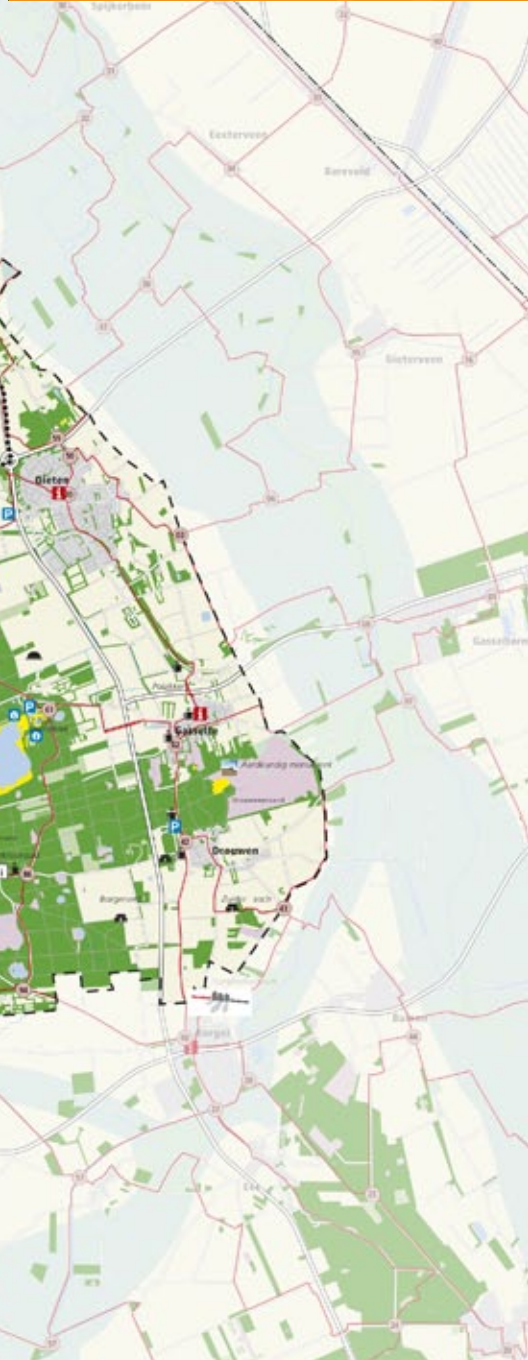
WORTH SAVING

Lend a hand by making a donation

Has the Drentsche Aa area stolen your heart too? You can help keep the area this beautiful by making a donation to the Drentsche Aa Area Fund (Gebiedsfonds Drentsche Aa). Every contribution, large or small, is used for maintenance and, where necessary, for restoration of this beautiful landscape. You can transfer your contribution to IBAN: NL73 RABO 0129.0784.84 in the name of Stichting Gebiedsfonds Drentsche Aa.

More information? Go to [www.gebiedsfondsrentscheaa.nl](http://www.gebiedsfondsrentscheaa.nl).

Gebiedsfonds  
DRENTSCHE AA



**Colophon**  
Graphics Docucentrum, province Drenthe  
Cartography GIS/CAD, province Drenthe  
Photography NP Drentsche Aa archives

## National Landscape and National Park Drentsche Aa

*The Drentsche Aa basin (about 34,000 ha) is a National Landscape. The central section (approximately 10,000 ha), more over, is a National Park. It is the only area in the Netherlands with this double status, which gives a good idea of just how special it is. The Drentsche Aa area is a varied old cultural landscape shaped by an age-old interplay of agriculture and nature.*



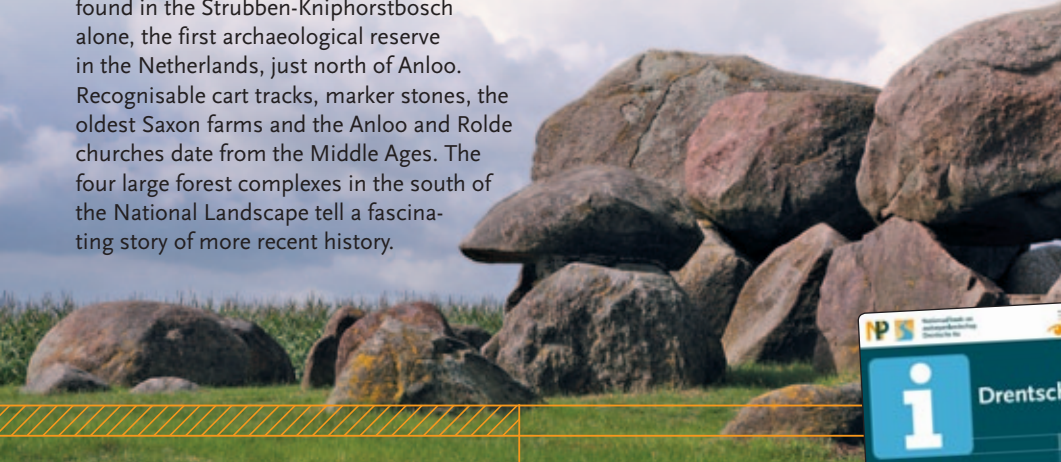
## Theesdorplandscape

The old, typical “esdorp” landscape has also been preserved along with the stream. The characteristic esdorpvillage includes one or more farmyards with old oaks and a few windy roads bordered in a somewhat loose order by the historic farms. This classic view can be seen in Anloo, Taarlo, Grolloo and Elp among other places. The common fields, the “essen”, are traditionally on the highest land near the village. The meadowlands are found in the low areas along the stream. The essen and stream valleys are flanked by wooded



## Rich cultural history

There are vestiges of at least five thousand years of habitation in the Drentsche Aa National Landscape. No other area in the Netherlands is so rich in prehistoric remains; it includes as many as twenty dolmens. The prehistoric burial mounds are even more numerous: dozens can be found in the Strubben-Kniphorstbosch alone, the first archaeological reserve in the Netherlands, just north of Anloo. Recognisable cart tracks, marker stones, the oldest Saxon farms and the Anloo and Rolde churches date from the Middle Ages. The four large forest complexes in the south of the National Landscape tell a fascinating story of more recent history.



## Walking and bicycling

Hikers and bicycle riders come into their own in the Drentsche Aa National Landscape. It has a dense network of footpaths, bicycle paths and quiet, partly unpaved roads. The area is also very suitable for horseback riding, mountain biking and Nordic walking. Dozens of walking and bicycle routes have been plotted, a great number of them marked. Free walking and bicycling routes can be downloaded by smartphone via [www.annodrenthe.nu](http://www.annodrenthe.nu). Good starting points for a walk or bicycle ride include the three “access gates” to the area - Tynaarlo, Anloo and Rolde with plenty of parking (see map).



## Perfect stream landscape

‘Drentsche Aa’ is the name of a fan of streams that eventually merge to form one stream. Each stream also has its own local name. While nearly all other streams in the Netherlands have been straightened out, most of the Drentsche Aa streams still follow their old, meandering courses undisturbed. This makes the Drentsche Aa one of the most valuable lowland streams in Europe.

banks, beyond which lay the vast heathlands in days gone by. The remnants of these are now interspersed with fields, meadows and forests.

## Profuse nature

The varied Drentsche Aa landscape is home to profuse nature. The flowing, clean water of the stream attracts many stream fish and dragonflies. The meadowlands along the stream are famous for their abundance of plants, including many rare species. All sorts of songbirds, woodpeckers and birds of prey brood on the wooded banks and in the forests. Other distinctive plants and animals can be found on the heathlands and sand drifts as well as in the meres.



They were planted on former heathlands in the crisis years in the thirties of the twentieth century as part of the “unemployment relief works” to provide wood for mining and industry. They have evolved into popular recreational areas with outstanding natural beauty.

## Balooërveld information centre

The information centre near the sheep pen in Balloo offers a presentation on the history, the environment and the sheep flock at Ballooërveld. You can see the sheep flock yourself daily at the sheep pen or at the Ballooërveld.

**Address** Crabbeweg 2, Balloo.

**Opening hours** 1 March - 1 Nov: daily from 9:00 AM to 6:00 PM; 1 Nov - 1 March: only on Saturdays and Sundays and during the Christmas holiday and spring half-term.

## Homanshof information centre in Anloo

The Staatsbosbeheer information centre is one of the access gates to the Drentsche Aa National Park. It is housed at a characteristic farm in the historic centre of Anloo. There is an exhibition and a film on the Drentsche Aa landscape. Various marked walking routes also start here.



**Address** Lunsenhof 20, Anloo, T. +31 (0)592 273061.

**Opening hours** 1 April - 31 Oct: from 9:00 AM to 5:00 PM; 1 Nov - 31 March: from 10:00 AM to 5:00 PM, closed on Mondays.

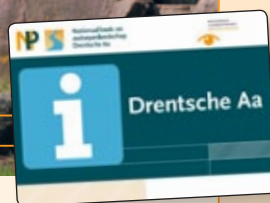
## Boomkroonpad outdoor centre

The Staatsbosbeheer outdoor centre at the Boomkroonpad in the Gieten-Borger forestry station has information on everything that is happening in nature in the forests and the rest of the surroundings. Various marked walking routes start here.



**Address** Steenhopenweg 4, Drouwen, T. +31 (0)592 377305.

**Opening hours** 1 April- 31 Oct: daily from 10:00 AM to 5:00 PM; 1 Nov - 31 March Sundays from 10:00 AM to 4:00 PM; during school holidays daily from 10:00 AM to 4:00 PM. Closed on 25 and 31 Dec and 1 Jan.



For further information on Staatsbosbeheer go to [www.staatsbosbeheer.nl](http://www.staatsbosbeheer.nl).

## Website [www.drentscheaa.nl](http://www.drentscheaa.nl)

The most complete and current summary of all activities in the Drentsche Aa area. The site also offers a great deal of background information on the area, its history, distinctive features, management and recent developments.



@NPDrentscheaa



[www.facebook.com/drentscheaa](http://www.facebook.com/drentscheaa)

## Other information (during office hours)

**General information** Secretariat:

P.O. Box 122, 9400 AC Assen  
T. +31 (0)592 365 864/225  
[drentscheaa@drenthe.nl](mailto:drentscheaa@drenthe.nl)  
[www.drentscheaa.nl](http://www.drentscheaa.nl)

**Information on education, communication and activities** IVN Drenthe:

P.O. Box 125, 9400 AC Assen  
T. +31 (0)592 371740